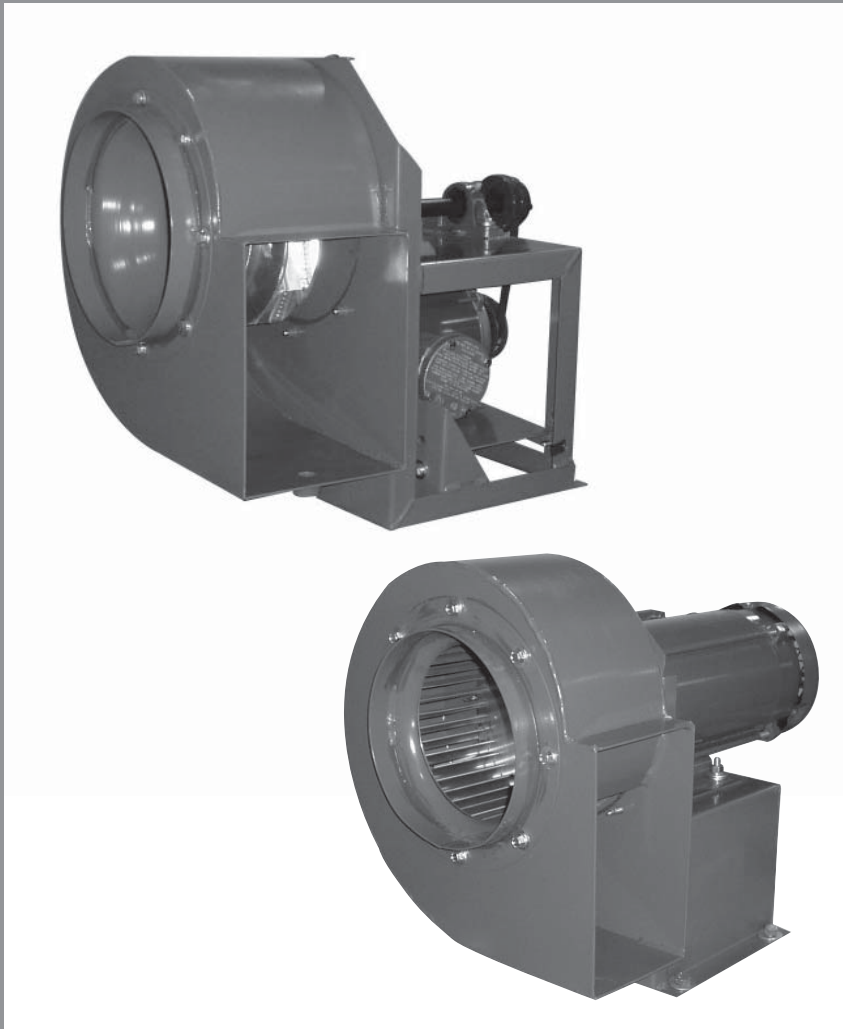


Twin City Fan & Blower

JUNIOR VENTILATING SETS

TYPE FCJ, BCJ, DDF

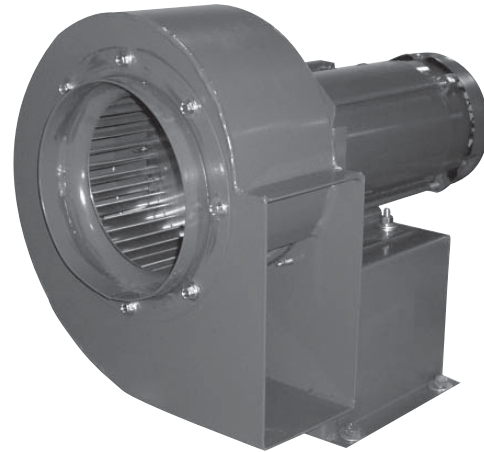


DDF – Direct Drive Ventilating Sets

Direct drive ventilating sets are ideal in applications where general ventilation or exhaust is required in small areas such as washrooms, restaurant counters, exhaust hoods, etc. Incorporating forward curved blades for maximum capacity, and available with steel, aluminum, or stainless steel construction, they provide optimal performance with minimal physical dimensions. Available in four sizes, direct drive ventilating sets are an economical solution for capacity requirements from 250 to 2100 cfm and static pressures to 1 $\frac{3}{4}$ ".

Accessories include:

- Weather cover
- Inlet and outlet screens
- Gravity backdraft dampers



Type DDF

FCJ/BCJ – Belt Driven Ventilating Sets

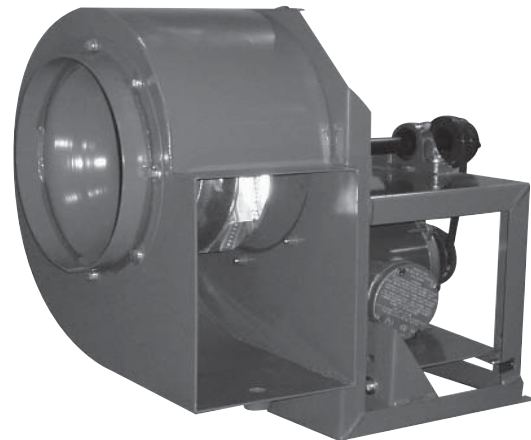
Belt driven ventilating sets are recommended where capacity and static pressure requirements are such that they cannot be met by direct drive sets, and where some variation in capacity may be required because of ductwork adjustments.

Belt driven ventilating sets are offered with both forward curved (FCJ) and non-overloading, backward inclined (BCJ) wheels. Fan housings are of heavy gauge, continuously welded construction and are available constructed of steel, aluminum, or stainless steel. Housings are convertible to eight standard discharge configurations. Adjustable pitch V-belt drives are used so capacity corrections can be readily made when needed. Specialized design of the support base provides easy access for electrical wiring and adjustment of the drives.

Belt driven ventilating sets are available with capacities from 260 to 1900 cfm and static pressures to 5".

Accessories include:

- Weather cover
- Inlet and outlet screens
- Gravity backdraft dampers
- Spark resistant construction - Type B



Type BCJ



Twin City Fan & Blower certifies that the Type BCJ fans shown on page 4 are licensed to bear the AMCA Seal. The ratings shown are based on tests and procedures performed in accordance with AMCA Publication 211 and AMCA Publication 311 and comply with the requirements of the AMCA Certified Ratings Program.



Type BCJ is available for listing under UL 705, Canadian UL 705, and UL 762. Check with your local representative.

©2002 Twin City Fan Companies, Ltd., Minneapolis, MN. All rights reserved.

Bulletin illustrations cover the general appearance of Twin City Fan & Blower products at the time of publication and we reserve the right to make changes in design and construction at any time without notice.

Performance Data

75 FCJ Belt Driven Ventilating Set

Wheel Diameter: 7¹¹/₁₆" Tip Speed, FPM: 2.012 x RPM Outlet Area: 0.325 ft²

| CFM | OV | 1/8" SP | | 1/4" SP | | 3/8" SP | | 1/2" SP | | 5/8" SP | | 3/4" SP | | 1" SP | | 1 1/4" SP | | 1 1/2" SP | |
|-----|------|---------|------|---------|------|---------|------|---------|------|---------|------|---------|------|-------|------|-----------|------|-----------|------|
| | | RPM | BHP | RPM | BHP | RPM | BHP | RPM | BHP | RPM | BHP | RPM | BHP | RPM | BHP | RPM | BHP | RPM | BHP |
| 260 | 800 | 632 | 0.02 | 832 | 0.03 | -996 | 0.05 | | | | | | | | | | | | |
| 292 | 900 | 659 | 0.02 | 847 | 0.04 | 1008 | 0.05 | 1148 | 0.07 | 1273 | 0.09 | | | | | | | | |
| 325 | 1000 | 691 | 0.03 | 866 | 0.04 | 1022 | 0.06 | 1159 | 0.08 | 1283 | 0.10 | 1396 | 0.12 | | | | | | |
| 357 | 1100 | 728 | 0.03 | 887 | 0.05 | 1037 | 0.06 | 1172 | 0.08 | 1293 | 0.11 | 1405 | 0.13 | | | | | | |
| 390 | 1200 | 769 | 0.04 | 912 | 0.05 | 1056 | 0.07 | 1187 | 0.09 | 1306 | 0.12 | 1416 | 0.14 | 1616 | 0.19 | | | | |
| 422 | 1300 | 812 | 0.05 | 940 | 0.06 | 1075 | 0.08 | 1203 | 0.10 | 1320 | 0.13 | 1428 | 0.15 | 1626 | 0.20 | 1803 | 0.25 | | |
| 455 | 1400 | 858 | 0.05 | 972 | 0.07 | 1099 | 0.09 | 1222 | 0.11 | 1336 | 0.14 | 1443 | 0.16 | 1637 | 0.22 | 1812 | 0.27 | 1973 | 0.33 |
| 487 | 1500 | 905 | 0.07 | 1008 | 0.08 | 1125 | 0.10 | 1242 | 0.13 | 1354 | 0.15 | 1458 | 0.18 | 1649 | 0.23 | 1823 | 0.29 | 1982 | 0.35 |
| 520 | 1600 | 954 | 0.08 | 1048 | 0.09 | 1154 | 0.11 | 1265 | 0.14 | 1373 | 0.16 | 1475 | 0.19 | 1663 | 0.25 | 1834 | 0.31 | 1992 | 0.37 |
| 552 | 1700 | 1003 | 0.09 | 1088 | 0.11 | 1185 | 0.13 | 1290 | 0.15 | 1393 | 0.18 | 1493 | 0.21 | 1678 | 0.26 | 1847 | 0.33 | 2003 | 0.39 |
| 585 | 1800 | 1054 | 0.11 | 1132 | 0.12 | 1222 | 0.14 | 1318 | 0.17 | 1417 | 0.19 | 1513 | 0.22 | 1695 | 0.28 | 1861 | 0.35 | 2015 | 0.42 |
| 617 | 1900 | 1104 | 0.12 | 1176 | 0.14 | 1259 | 0.16 | 1348 | 0.18 | 1443 | 0.21 | 1535 | 0.24 | 1713 | 0.30 | 1876 | 0.37 | 2029 | 0.44 |
| 650 | 2000 | 1156 | 0.14 | 1223 | 0.16 | 1299 | 0.18 | 1382 | 0.20 | 1470 | 0.23 | 1559 | 0.26 | 1732 | 0.33 | 1893 | 0.39 | | |
| 682 | 2100 | 1206 | 0.16 | 1269 | 0.18 | 1340 | 0.20 | 1418 | 0.23 | 1499 | 0.25 | 1585 | 0.28 | 1751 | 0.35 | | | | |
| 715 | 2200 | 1259 | 0.19 | 1319 | 0.20 | 1384 | 0.22 | 1457 | 0.25 | 1533 | 0.28 | 1613 | 0.31 | 1774 | 0.37 | | | | |
| 747 | 2300 | 1310 | 0.21 | 1367 | 0.23 | 1428 | 0.25 | 1496 | 0.27 | 1568 | 0.30 | 1642 | 0.33 | 1798 | 0.40 | | | | |
| 780 | 2400 | 1364 | 0.24 | 1417 | 0.26 | 1474 | 0.28 | 1538 | 0.30 | 1606 | 0.33 | 1675 | 0.36 | | | | | | |
| 812 | 2500 | 1415 | 0.27 | 1466 | 0.29 | 1521 | 0.31 | 1580 | 0.33 | 1644 | 0.36 | | | | | | | | |

90 FCJ Belt Driven Ventilating Set

Wheel Diameter: 9³/₁₆" Tip Speed, FPM: 2.405 x RPM Outlet Area: 0.451 ft²

| CFM | OV | 1/8" SP | | 1/4" SP | | 3/8" SP | | 1/2" SP | | 5/8" SP | | 3/4" SP | | 1" SP | | 1 1/4" SP | | 1 1/2" SP | |
|------|------|---------|------|---------|------|---------|------|---------|------|---------|------|---------|------|-------|------|-----------|------|-----------|------|
| | | RPM | BHP | RPM | BHP | RPM | BHP | RPM | BHP | RPM | BHP | RPM | BHP | RPM | BHP | RPM | BHP | RPM | BHP |
| 361 | 800 | 495 | 0.02 | 665 | 0.04 | 804 | 0.06 | 924 | 0.08 | 1032 | 0.10 | 1132 | 0.12 | | | | | | |
| 406 | 900 | 511 | 0.03 | 673 | 0.04 | 809 | 0.06 | 927 | 0.08 | 1033 | 0.11 | 1130 | 0.13 | 1308 | 0.18 | | | | |
| 451 | 1000 | 531 | 0.03 | 683 | 0.05 | 816 | 0.07 | 932 | 0.09 | 1036 | 0.12 | 1132 | 0.14 | 1305 | 0.20 | | | | |
| 496 | 1100 | 554 | 0.04 | 695 | 0.06 | 824 | 0.08 | 938 | 0.10 | 1041 | 0.13 | 1135 | 0.15 | 1306 | 0.21 | 1460 | 0.27 | 1603 | 0.34 |
| 541 | 1200 | 579 | 0.04 | 710 | 0.06 | 834 | 0.09 | 946 | 0.12 | 1047 | 0.14 | 1140 | 0.17 | 1308 | 0.23 | 1459 | 0.29 | 1599 | 0.35 |
| 586 | 1300 | 607 | 0.05 | 728 | 0.07 | 845 | 0.10 | 954 | 0.13 | 1054 | 0.15 | 1146 | 0.18 | 1312 | 0.24 | 1461 | 0.31 | 1599 | 0.38 |
| 631 | 1400 | 636 | 0.06 | 748 | 0.08 | 859 | 0.11 | 964 | 0.14 | 1062 | 0.17 | 1153 | 0.20 | 1317 | 0.26 | 1465 | 0.33 | 1600 | 0.40 |
| 676 | 1500 | 666 | 0.07 | 770 | 0.10 | 875 | 0.12 | 976 | 0.15 | 1071 | 0.18 | 1161 | 0.22 | 1323 | 0.28 | 1469 | 0.35 | 1603 | 0.42 |
| 722 | 1600 | 698 | 0.09 | 795 | 0.11 | 893 | 0.14 | 990 | 0.17 | 1082 | 0.20 | 1170 | 0.23 | 1330 | 0.30 | 1475 | 0.38 | 1608 | 0.45 |
| 767 | 1700 | 730 | 0.10 | 820 | 0.12 | 913 | 0.15 | 1005 | 0.18 | 1094 | 0.22 | 1180 | 0.25 | 1338 | 0.33 | 1481 | 0.40 | 1612 | 0.48 |
| 812 | 1800 | 763 | 0.12 | 848 | 0.14 | 935 | 0.17 | 1022 | 0.20 | 1108 | 0.23 | 1191 | 0.27 | 1346 | 0.35 | 1487 | 0.43 | 1618 | 0.51 |
| 857 | 1900 | 796 | 0.13 | 876 | 0.16 | 958 | 0.19 | 1041 | 0.22 | 1124 | 0.26 | 1204 | 0.29 | 1356 | 0.37 | 1495 | 0.46 | 1624 | 0.54 |
| 902 | 2000 | 830 | 0.15 | 905 | 0.18 | 983 | 0.21 | 1062 | 0.24 | 1141 | 0.28 | 1218 | 0.32 | 1366 | 0.40 | 1504 | 0.48 | 1632 | 0.57 |
| 947 | 2100 | 864 | 0.17 | 936 | 0.20 | 1009 | 0.23 | 1085 | 0.26 | 1159 | 0.30 | 1234 | 0.34 | 1378 | 0.42 | 1513 | 0.51 | 1640 | 0.61 |
| 992 | 2200 | 899 | 0.20 | 967 | 0.22 | 1037 | 0.25 | 1108 | 0.29 | 1180 | 0.33 | 1251 | 0.37 | 1391 | 0.45 | 1523 | 0.54 | 1648 | 0.64 |
| 1037 | 2300 | 934 | 0.22 | 998 | 0.25 | 1065 | 0.28 | 1133 | 0.32 | 1202 | 0.36 | 1270 | 0.40 | 1405 | 0.48 | 1534 | 0.58 | 1658 | 0.68 |
| 1082 | 2400 | 969 | 0.25 | 1030 | 0.28 | 1094 | 0.31 | 1159 | 0.35 | 1225 | 0.39 | 1290 | 0.43 | 1421 | 0.52 | 1547 | 0.61 | 1668 | 0.71 |
| 1127 | 2500 | 1004 | 0.28 | 1063 | 0.31 | 1124 | 0.34 | 1186 | 0.38 | 1249 | 0.42 | 1312 | 0.46 | 1437 | 0.55 | 1561 | 0.65 | 1679 | 0.75 |

105 FCJ Belt Driven Ventilating Set

Wheel Diameter: 10⁵/₁₆" Tip Speed, FPM: 2.782 x RPM Outlet Area: 0.594 ft²

| CFM | OV | 1/8" SP | | 1/4" SP | | 3/8" SP | | 1/2" SP | | 5/8" SP | | 3/4" SP | | 1" SP | | 1 1/4" SP | | 1 1/2" SP | |
|------|------|---------|------|---------|------|---------|------|---------|------|---------|------|---------|------|-------|------|-----------|------|-----------|------|
| | | RPM | BHP | RPM | BHP | RPM | BHP | RPM | BHP | RPM | BHP | RPM | BHP | RPM | BHP | RPM | BHP | RPM | BHP |
| 475 | 800 | 404 | 0.04 | 519 | 0.06 | 617 | 0.08 | | | | | | | | | | | | |
| 535 | 900 | 425 | 0.04 | 533 | 0.07 | 627 | 0.10 | 710 | 0.12 | | | | | | | | | | |
| 594 | 1000 | 447 | 0.05 | 548 | 0.08 | 638 | 0.11 | 719 | 0.14 | 794 | 0.17 | 863 | 0.20 | | | | | | |
| 653 | 1100 | 472 | 0.07 | 566 | 0.10 | 652 | 0.13 | 730 | 0.16 | 802 | 0.19 | 870 | 0.23 | | | | | | |
| 713 | 1200 | 498 | 0.08 | 585 | 0.11 | 667 | 0.14 | 743 | 0.18 | 813 | 0.22 | 878 | 0.25 | 999 | 0.33 | | | | |
| 772 | 1300 | 524 | 0.10 | 606 | 0.13 | 684 | 0.16 | 757 | 0.20 | 825 | 0.24 | 889 | 0.28 | 1006 | 0.36 | 1115 | 0.44 | | |
| 832 | 1400 | 551 | 0.12 | 629 | 0.15 | 703 | 0.19 | 773 | 0.23 | 839 | 0.27 | 901 | 0.31 | 1016 | 0.39 | 1121 | 0.48 | 1220 | 0.57 |
| 891 | 1500 | 579 | 0.14 | 653 | 0.17 | 723 | 0.21 | 790 | 0.25 | 854 | 0.30 | 914 | 0.34 | 1026 | 0.43 | 1129 | 0.52 | 1226 | 0.62 |
| 950 | 1600 | 607 | 0.16 | 678 | 0.20 | 744 | 0.24 | 808 | 0.28 | 870 | 0.33 | 928 | 0.37 | 1038 | 0.47 | 1139 | 0.56 | 1233 | 0.66 |
| 1010 | 1700 | 636 | 0.19 | 704 | 0.23 | 767 | 0.27 | 828 | 0.32 | 887 | 0.36 | 944 | 0.41 | 1051 | 0.51 | 1150 | 0.61 | 1243 | 0.71 |
| 1069 | 1800 | 665 | 0.22 | 731 | 0.26 | 791 | 0.31 | 849 | 0.35 | 906 | 0.40 | 961 | 0.45 | 1065 | 0.55 | 1162 | 0.66 | 1253 | 0.77 |
| 1129 | 1900 | 695 | 0.25 | 758 | 0.30 | 816 | 0.34 | 872 | 0.39 | 926 | 0.44 | 979 | 0.49 | 1080 | 0.60 | 1175 | 0.71 | 1264 | 0.83 |
| 1188 | 2000 | 725 | 0.29 | 785 | 0.34 | 841 | 0.39 | 895 | 0.44 | 947 | 0.49 | 998 | 0.54 | 1096 | 0.65 | 1189 | 0.77 | 1277 | 0.89 |
| 1247 | 2100 | 754 | 0.33 | 813 | 0.38 | 867 | 0.43 | 919 | 0.48 | 969 | 0.54 | 1018 | 0.59 | 1113 | 0.71 | 1204 | 0.83 | 1290 | 0.95 |
| 1307 | 2200 | 785 | 0.37 | 841 | 0.43 | 894 | 0.48 | 944 | 0.53 | 992 | 0.59 | 1039 | 0.64 | 1132 | 0.77 | 1220 | 0.89 | 1304 | 1.02 |
| 1366 | 2300 | 815 | 0.42 | 870 | 0.48 | 920 | 0.53 | 969 | 0.59 | 1016 | 0.65 | 1061 | 0.70 | 1150 | 0.82 | 1237 | 0.96 | 1319 | 1.09 |
| 1426 | 2400 | 846 | 0.47 | 899 | 0.53 | 948 | 0.59 | 995 | 0.65 | 1040 | 0.71 | 1084 | 0.77 | 1170 | 0.89 | 1254 | 1.02 | 1335 | 1.16 |
| 1485 | 2500 | 876 | 0.53 | 928 | 0.59 | 975 | 0.65 | 1021 | 0.71 | 1065 | 0.77 | 1108 | 0.83 | 1191 | 0.96 | 1273 | 1.10 | 1351 | 1.24 |

Performance Data

DDF Direct Drive Ventilating Sets

| MODEL NO. | MOTOR HP | RPM | 1/8" SP | | 1/4" SP | | 3/8" SP | | 1/2" SP | | 5/8" SP | | 3/4" SP | | 1" SP | |
|-----------|----------|------|---------|------|---------|------|---------|------|---------|------|---------|------|---------|------|-------|------|
| | | | CFM | OV | CFM | OV | CFM | OV | CFM | OV | CFM | OV | CFM | OV | CFM | OV |
| DDF60L | 1/6 | 1150 | 324 | 1466 | 254 | 1149 | — | — | — | — | — | — | — | — | — | — |
| DDF60H | 1/6 | 1750 | 545 | 2466 | 506 | 2290 | 464 | 2100 | 421 | 1905 | 362 | 1638 | 292 | 1321 | — | — |
| DDF75L | 1/6 | 1150 | 668 | 2264 | 586 | 1986 | 516 | 1749 | 447 | 1515 | — | — | — | — | — | — |
| DDF75M | 1/3 | 1750 | — | — | — | — | — | — | — | — | 874 | 2963 | 828 | 2807 | 741 | 2512 |
| DDF75H | 1/2 | 1750 | 1085 | 3678 | 1033 | 3502 | 978 | 3315 | 923 | 3129 | 874 | 2963 | 828 | 2807 | 741 | 2512 |
| DDF90L | 1/3 | 1150 | — | — | 1216 | 2916 | 1129 | 2707 | 1042 | 2499 | 946 | 2269 | 802 | 1923 | — | — |
| DDF90M | 1/2 | 1150 | 1300 | 3118 | 1216 | 2916 | 1129 | 2707 | 1042 | 2499 | 946 | 2269 | 802 | 1923 | — | — |
| DDF90J | 1½ | 1750 | 2048 | 4911 | 1994 | 4782 | 1940 | 4652 | 1886 | 4523 | 1830 | 4388 | 1772 | 4249 | 1657 | 3974 |
| DDF105L | 1 | 1150 | 2127 | 3648 | 2036 | 3492 | 1945 | 3336 | 1855 | 3182 | 1766 | 3029 | 1681 | 2883 | 1484 | 2545 |

| MODEL NO. | MOTOR HP | RPM | 1" SP | | 1¼" SP | | 1½" SP | | 1¾" SP | |
|-----------|----------|------|-------|------|--------|------|--------|------|--------|------|
| | | | CFM | OV | CFM | OV | CFM | OV | CFM | OV |
| DDF90H | 1 | 1750 | — | — | 1543 | 3700 | 1408 | 3376 | 1205 | 2890 |
| DDF90J | 1½ | 1750 | 1657 | 3974 | 1543 | 3700 | 1408 | 3376 | 1205 | 2890 |

Model DDF is not licensed to bear the AMCA Seal.

90 BCJ SWSI Ventilating Set

Wheel Diameter: 10½" Tip Speed, FPM: 2.75 x RPM Outlet Area: 0.653 ft²

| CFM | OV | 1/8" SP | | 1/4" SP | | 1/2" SP | | 3/4" SP | | 1" SP | | 1½" SP | | 2" SP | | 3" SP | | 4" SP | |
|------|------|---------|------|---------|------|---------|------|---------|------|-------|------|--------|------|-------|------|-------|------|-------|------|
| | | RPM | BHP | RPM | BHP | RPM | BHP | RPM | BHP | RPM | BHP | RPM | BHP | RPM | BHP | RPM | BHP | RPM | BHP |
| 261 | 400 | 829 | 0.01 | 970 | 0.02 | 1190 | 0.04 | 1470 | 0.07 | 1626 | 0.09 | | | | | | | | |
| 327 | 500 | 964 | 0.02 | 1088 | 0.03 | 1305 | 0.05 | 1584 | 0.09 | 1722 | 0.12 | | | | | | | | |
| 392 | 600 | 1095 | 0.03 | 1220 | 0.04 | 1409 | 0.06 | 1688 | 0.11 | 1836 | 0.14 | 2069 | 0.20 | | | | | | |
| 457 | 700 | 1232 | 0.04 | 1352 | 0.05 | 1527 | 0.08 | 1799 | 0.13 | 1940 | 0.17 | 2184 | 0.24 | 2380 | 0.30 | | | | |
| 522 | 800 | 1374 | 0.05 | 1483 | 0.07 | 1659 | 0.10 | 1927 | 0.16 | 2051 | 0.20 | 2295 | 0.28 | 2495 | 0.35 | 2840 | 0.50 | | |
| 588 | 900 | 1521 | 0.07 | 1618 | 0.09 | 1794 | 0.13 | 2059 | 0.20 | 2173 | 0.23 | 2399 | 0.32 | 2608 | 0.41 | 2938 | 0.57 | 3251 | 0.75 |
| 653 | 1000 | 1668 | 0.10 | 1756 | 0.11 | 1926 | 0.16 | 2193 | 0.23 | 2304 | 0.28 | 2508 | 0.36 | 2712 | 0.46 | 3052 | 0.65 | 3334 | 0.82 |
| 718 | 1100 | 1817 | 0.12 | 1898 | 0.14 | 2056 | 0.19 | 2273 | 0.31 | 2373 | 0.34 | 2583 | 0.44 | 2819 | 0.52 | 3168 | 0.73 | 3444 | 0.92 |
| 784 | 1200 | 1970 | 0.16 | 2044 | 0.18 | 2190 | 0.22 | 2325 | 0.27 | 2457 | 0.32 | 2573 | 0.38 | 2760 | 0.48 | 2932 | 0.58 | 3274 | 0.81 |
| 849 | 1300 | 2121 | 0.19 | 2190 | 0.22 | 2325 | 0.27 | 2457 | 0.32 | 2573 | 0.38 | 2760 | 0.48 | 2932 | 0.58 | 3274 | 0.81 | 3560 | 1.03 |
| 914 | 1400 | 2274 | 0.24 | 2338 | 0.26 | 2463 | 0.31 | 2588 | 0.37 | 2705 | 0.43 | 2893 | 0.54 | 3055 | 0.65 | 3377 | 0.89 | 3673 | 1.14 |
| 980 | 1500 | 2429 | 0.29 | 2489 | 0.32 | 2606 | 0.37 | 2723 | 0.43 | 2837 | 0.49 | 3029 | 0.62 | 3186 | 0.73 | 3485 | 0.98 | | |
| 1045 | 1600 | 2582 | 0.35 | 2639 | 0.38 | 2749 | 0.43 | 2858 | 0.49 | 2968 | 0.56 | 3162 | 0.70 | 3319 | 0.82 | 3600 | 1.07 | | |
| 1110 | 1700 | 2736 | 0.41 | 2789 | 0.44 | 2894 | 0.50 | 2996 | 0.57 | 3100 | 0.64 | 3294 | 0.78 | 3453 | 0.92 | | | | |
| 1175 | 1800 | 2890 | 0.49 | 2940 | 0.52 | 3040 | 0.58 | 3137 | 0.65 | 3234 | 0.72 | 3424 | 0.87 | 3587 | 1.02 | | | | |
| 1241 | 1900 | 3046 | 0.57 | 3094 | 0.60 | 3189 | 0.67 | 3282 | 0.74 | 3373 | 0.81 | 3556 | 0.97 | | | | | | |

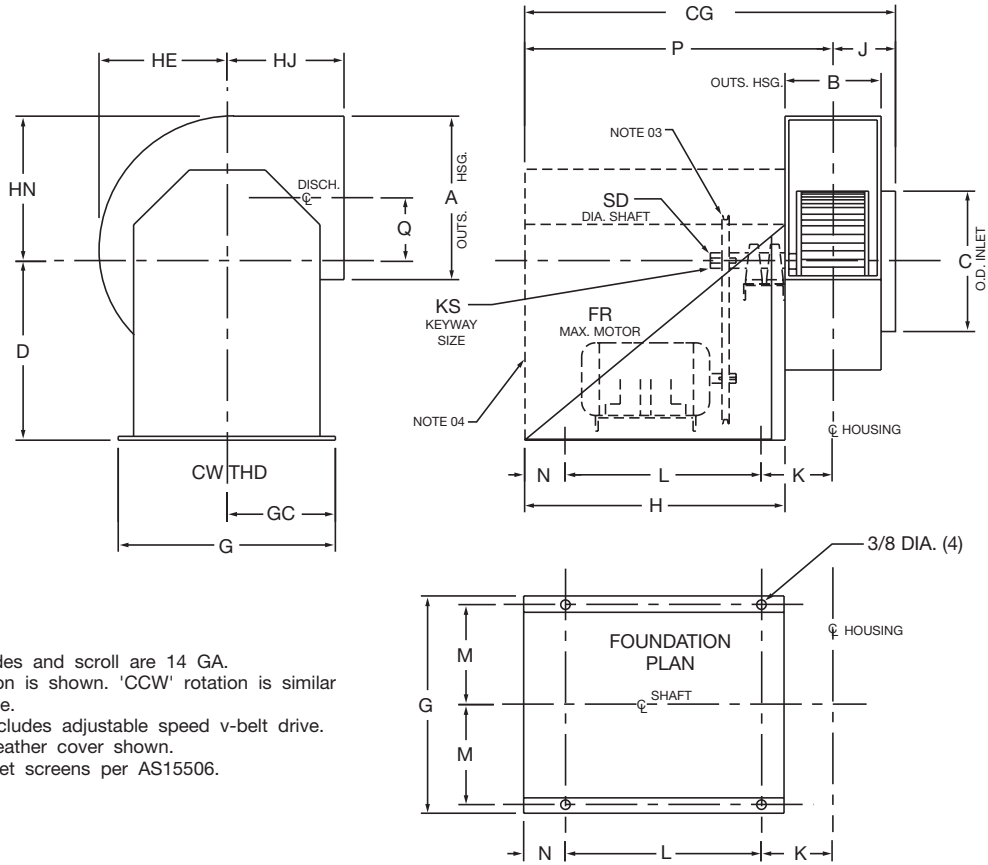
105 BCJ SWSI Ventilating Set

Wheel Diameter: 10½" Tip Speed, FPM: 2.75 x RPM Outlet Area: 0.653 ft²

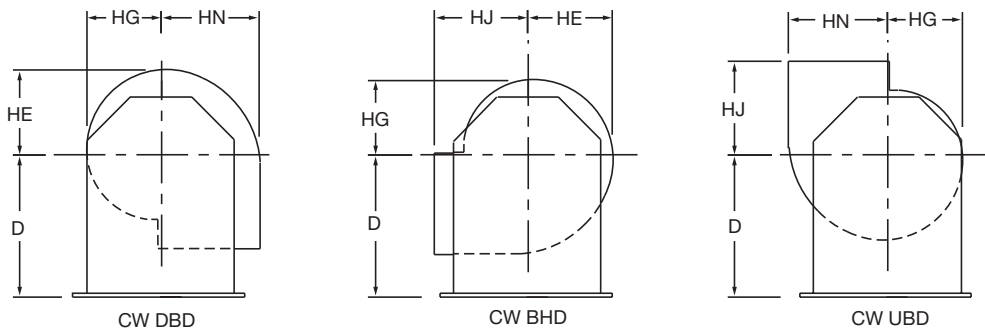
| CFM | OV | 1/4" SP | | 1/2" SP | | 3/4" SP | | 1" SP | | 1½" SP | | 2" SP | | 3" SP | | 4" SP | | 5" SP | |
|------|------|---------|------|---------|------|---------|------|-------|------|--------|------|-------|------|-------|------|-------|------|-------|------|
| | | RPM | BHP | RPM | BHP | RPM | BHP | RPM | BHP | RPM | BHP | RPM | BHP | RPM | BHP | RPM | BHP | RPM | BHP |
| 327 | 500 | 901 | 0.02 | 1151 | 0.04 | 1360 | 0.07 | | | | | | | | | | | | |
| 392 | 600 | 980 | 0.03 | 1203 | 0.05 | 1403 | 0.08 | 1579 | 0.11 | | | | | | | | | | |
| 457 | 700 | 1063 | 0.04 | 1267 | 0.06 | 1453 | 0.09 | 1623 | 0.12 | 1920 | 0.19 | | | | | | | | |
| 522 | 800 | 1149 | 0.05 | 1346 | 0.08 | 1512 | 0.10 | 1674 | 0.14 | 1961 | 0.21 | 2214 | 0.29 | | | | | | |
| 588 | 900 | 1239 | 0.06 | 1429 | 0.09 | 1585 | 0.12 | 1732 | 0.15 | 2009 | 0.24 | 2255 | 0.32 | | | | | | |
| 653 | 1000 | 1330 | 0.07 | 1512 | 0.11 | 1665 | 0.14 | 1800 | 0.18 | 2061 | 0.26 | 2300 | 0.35 | 2720 | 0.55 | | | | |
| 784 | 1200 | 1522 | 0.11 | 1686 | 0.14 | 1831 | 0.19 | 1961 | 0.23 | 2187 | 0.32 | 2405 | 0.41 | 2806 | 0.63 | 3158 | 0.87 | 3477 | 1.12 |
| 914 | 1400 | 1721 | 0.15 | 1868 | 0.20 | 2003 | 0.24 | 2126 | 0.30 | 2343 | 0.40 | 2535 | 0.49 | 2907 | 0.72 | 3246 | 0.98 | 3555 | 1.25 |
| 1045 | 1600 | 1927 | 0.21 | 2058 | 0.26 | 2183 | 0.31 | 2298 | 0.37 | 2509 | 0.49 | 2693 | 0.60 | 3025 | 0.83 | 3348 | 1.10 | 3647 | 1.40 |
| 1175 | 1800 | 2135 | 0.29 | 2253 | 0.34 | 2367 | 0.40 | 2476 | 0.45 | 2676 | 0.59 | 2857 | 0.72 | 3169 | 0.97 | 3462 | 1.24 | | |
| 1306 | 2000 | 2347 | 0.38 | 2455 | 0.44 | 2559 | 0.50 | 2661 | 0.57 | 2850 | 0.70 | 3024 | 0.85 | 3331 | 1.14 | 3600 | 1.41 | | |
| 1437 | 2200 | 2562 | 0.49 | 2660 | 0.56 | 2756 | 0.63 | 2850 | 0.70 | 3030 | 0.83 | 3196 | 0.99 | 3496 | 1.32 | | | | |
| 1567 | 2400 | 2776 | 0.62 | 2867 | 0.70 | 2956 | 0.77 | 3043 | 0.85 | 3213 | 1.00 | 3371 | 1.15 | 3662 | 1.51 | | | | |
| 1698 | 2600 | 2994 | 0.77 | 3078 | 0.86 | 3160 | 0.94 | 3241 | 1.02 | 3400 | 1.18 | 3553 | 1.34 | | | | | | |
| 1828 | 2800 | 3210 | 0.95 | 3289 | 1.04 | 3366 | 1.13 | 3442 | 1.22 | 3591 | 1.39 | | | | | | | | |
| 1959 | 3000 | 3429 | 1.15 | 3503 | 1.25 | 3575 | 1.35 | 3647 | 1.44 | | | | | | | | | | |

Performance is for installation Type B & D: Free or ducted inlet, ducted outlet.
 Power rating (bhp) does not include drive losses.
 Performance ratings do not include the effects of appurtenances in the airstream.
 Underlined numbers indicate maximum static efficiency.

Dimensional Data – FCJ 75 & 90



- NOTES:**
1. Housing sides and scroll are 14 GA.
 2. 'CW' rotation is shown. 'CCW' rotation is similar but opposite.
 3. Package includes adjustable speed v-belt drive.
 4. Optional weather cover shown.
 5. Optional inlet screens per AS15506.



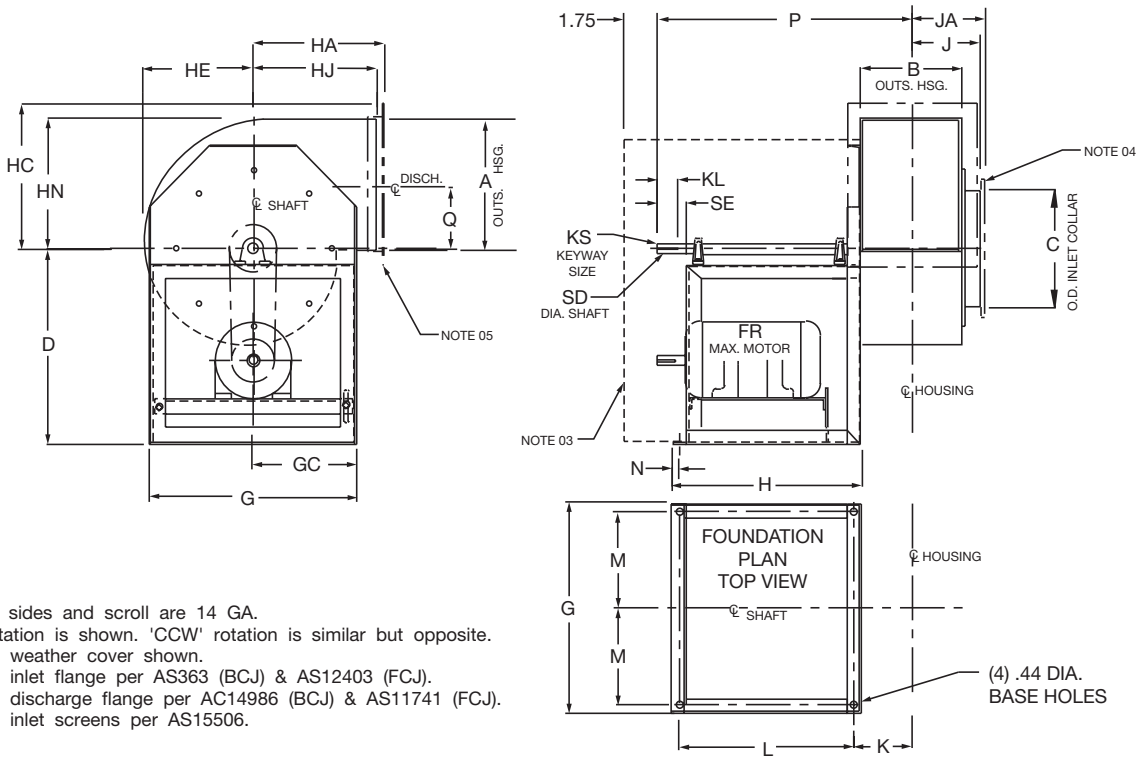
| FAN SIZE | A | B | C | CG | D | FR | G | GC | H | HE | HG |
|----------|-------|------|------|-------|-------|----|-------|------|-------|------|------|
| 75 | 8.50 | 5.00 | 7.50 | 25.19 | 13.00 | 56 | 12.25 | 6.13 | 18.88 | 6.56 | 5.81 |
| 90 | 10.00 | 6.00 | 9.00 | 26.19 | 13.00 | 56 | 14.00 | 7.00 | 18.88 | 8.00 | 6.81 |

| FAN SIZE | HJ | HN | J | K | KS | L | M | N | P | Q | SD |
|----------|------|------|------|------|-----------|-------|------|------|-------|------|-------|
| 75 | 6.13 | 7.88 | 3.56 | 3.69 | .19 x .09 | 14.75 | 5.63 | 3.06 | 21.63 | 3.63 | 0.625 |
| 90 | 7.00 | 9.25 | 4.06 | 4.19 | .19 x .09 | 14.75 | 6.50 | 3.06 | 22.13 | 4.25 | 0.625 |

AC10748B

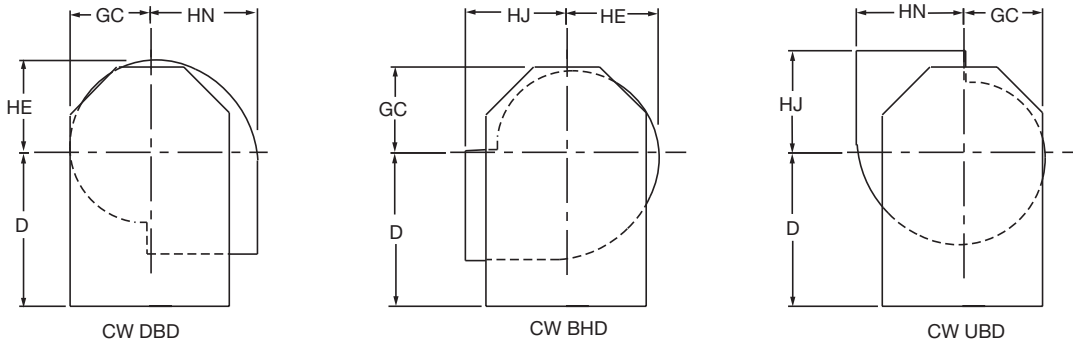
DIMENSIONS ARE SUBJECT TO CHANGE. CERTIFIED DRAWINGS AVAILABLE UPON REQUEST.

Dimensional Data – FCJ 105 / BCJ 90 & 105



NOTES:

1. Housing sides and scroll are 14 GA.
2. 'CW' rotation is shown. 'CCW' rotation is similar but opposite.
3. Optional weather cover shown.
4. Optional inlet flange per AS363 (BCJ) & AS12403 (FCJ).
5. Optional discharge flange per AC14986 (BCJ) & AS11741 (FCJ).
6. Optional inlet screens per AS15506.



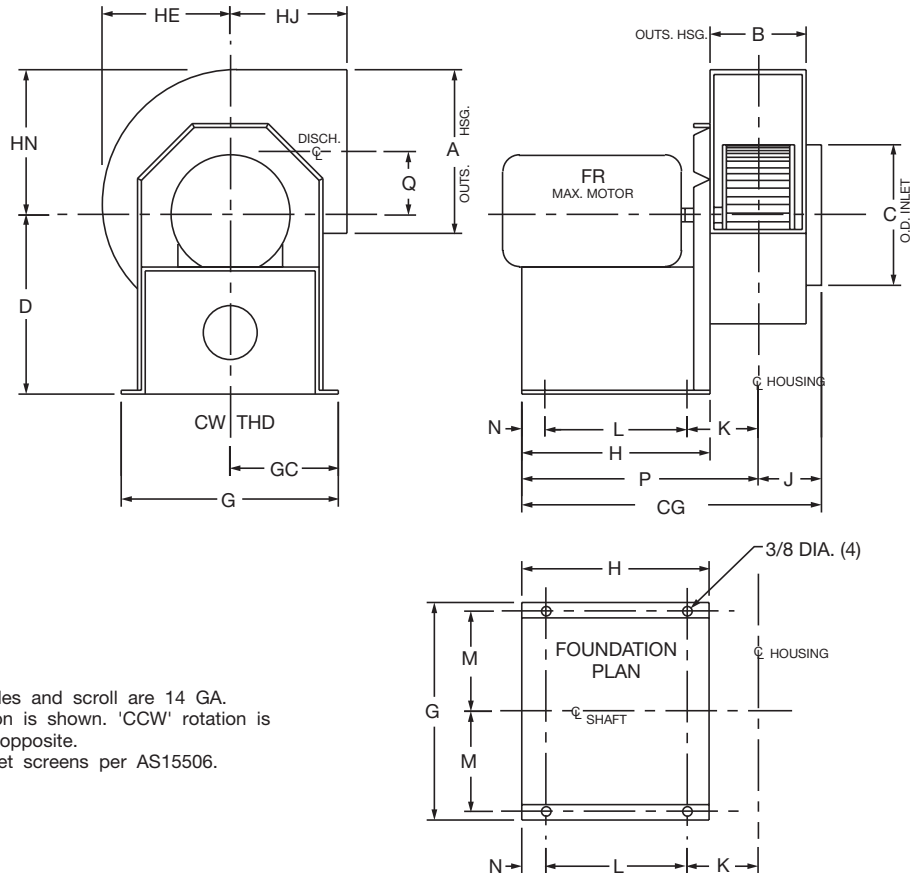
| FAN SIZE | A | B | C | D | FR | G | GC | H | HA | HC | HE | HJ | HN |
|----------|-------|------|-------|-------|------|----|----|-------|------|-------|------|----|-------|
| 90 BCJ | 11.19 | 8.63 | 11.13 | 14.50 | 145T | 16 | 8 | 13.44 | 9.50 | 12.13 | 9.06 | 9 | 11.13 |
| 105 BCJ | 11.19 | 8.63 | 11.13 | 14.50 | 145T | 16 | 8 | 13.44 | 9.50 | 12.13 | 9.06 | 9 | 11.13 |
| 105 FCJ | 12.00 | 7.00 | 10.50 | 14.50 | 145T | 16 | 8 | 13.44 | 9.50 | 11.56 | 9.38 | 9 | 10.56 |

| FAN SIZE | J | JA | K | KL | KS | L | M | N | P | Q | SD | SE |
|----------|------|------|------|----|-----------|----|------|------|-------|------|------|------|
| 90 BCJ | 5.38 | 5.50 | 5.19 | 2 | .25 x .13 | 12 | 6.75 | 0.56 | 19.19 | 5.53 | 1.00 | 2.75 |
| 105 BCJ | 5.38 | 5.50 | 5.19 | 2 | .25 x .13 | 12 | 6.75 | 0.56 | 19.19 | 5.53 | 1.00 | 2.75 |
| 105 FCJ | 4.56 | 4.69 | 4.38 | 2 | .25 x .13 | 12 | 6.75 | 0.56 | 18.38 | 4.56 | 1.00 | 2.75 |

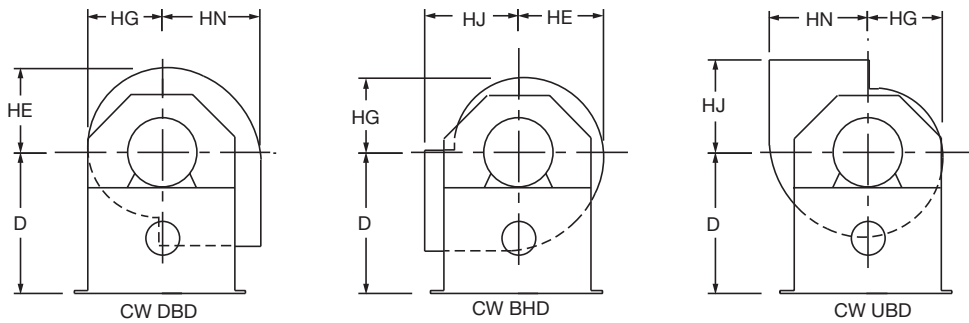
AC13485D

DIMENSIONS ARE SUBJECT TO CHANGE. CERTIFIED DRAWINGS AVAILABLE UPON REQUEST.

Dimensional Data – DDF



- NOTES:**
1. Housing sides and scroll are 14 GA.
 2. 'CW' rotation is shown. 'CCW' rotation is similar but opposite.
 3. Optional inlet screens per AS15506.



| FAN SIZE | A | B | C | CG | D | FR | G | GC | H | HE |
|----------|-------|------|-------|-------|-------|------|-------|------|-------|------|
| 60 | 7.50 | 4.25 | 6.00 | 13.38 | 8.13 | 56 | 9.75 | 4.88 | 8.00 | 5.50 |
| 75 | 8.50 | 5.00 | 7.50 | 14.13 | 9.75 | 56 | 11.25 | 5.63 | 8.00 | 6.56 |
| 90 | 10.00 | 6.00 | 9.00 | 18.13 | 10.50 | 145T | 12.63 | 6.31 | 11.00 | 8.00 |
| 105 | 12.00 | 7.00 | 10.50 | 20.13 | 12.63 | 145T | 15.88 | 7.94 | 11.00 | 9.38 |

| FAN SIZE | HG | HJ | HN | J | K | L | M | N | P | Q |
|----------|------|------|-------|------|------|------|------|------|-------|------|
| 60 | 4.75 | 5.50 | 6.63 | 3.19 | 3.19 | 6.00 | 4.31 | 1.00 | 10.19 | 2.88 |
| 75 | 5.81 | 6.13 | 7.88 | 3.56 | 3.56 | 6.00 | 5.13 | 1.00 | 10.56 | 3.63 |
| 90 | 6.81 | 7.00 | 9.25 | 4.06 | 4.06 | 9.00 | 5.81 | 1.00 | 14.06 | 4.25 |
| 105 | 7.94 | 9.00 | 10.56 | 4.56 | 4.56 | 9.00 | 7.44 | 1.00 | 14.56 | 4.56 |

AC10804B

DIMENSIONS ARE SUBJECT TO CHANGE. CERTIFIED DRAWINGS AVAILABLE UPON REQUEST.

Unlimited Options...

Commercial Fans

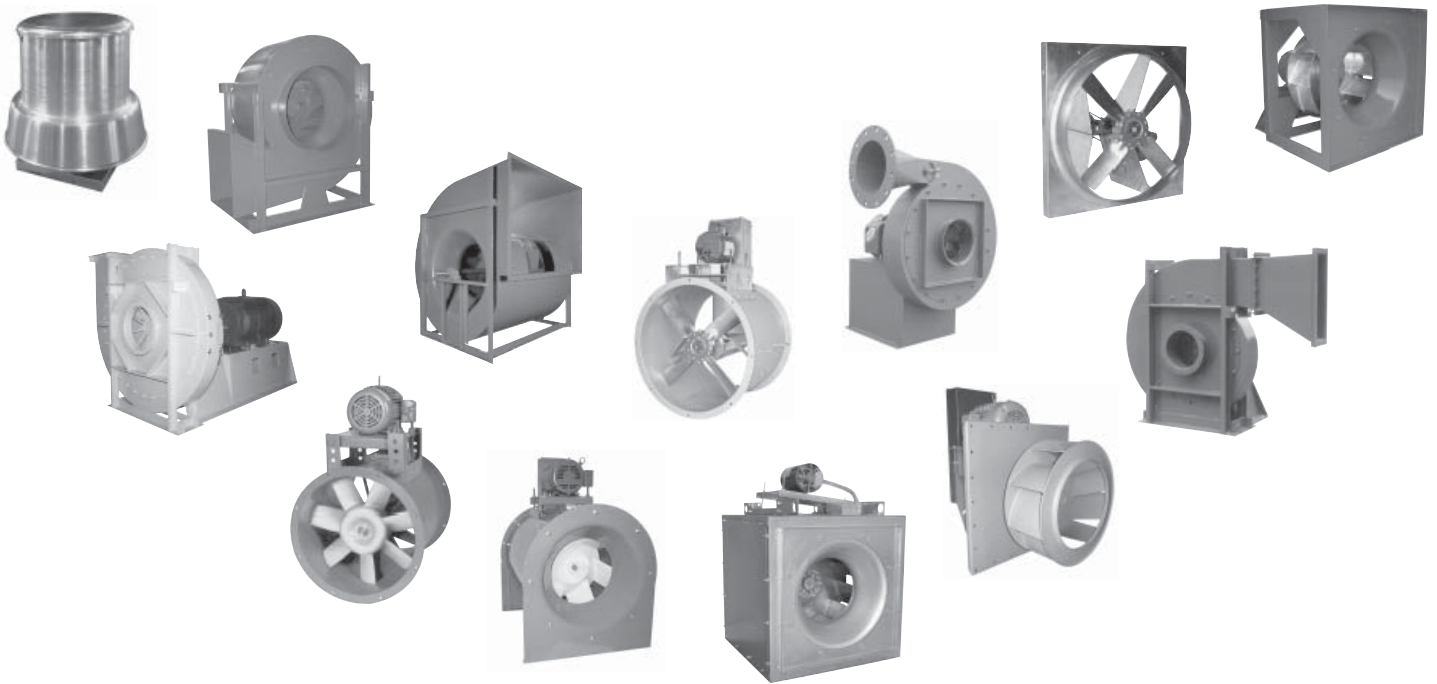
Centrifugal Fans • Utility Sets • Inline Centrifugal Fans • Plenum Fans
Radial Bladed Fans • Centrifugal Roof & Wall Exhausters • Filtered Supply Fans
Gravity Relief Ventilators • Ceiling & Cabinet Ventilators • Propeller Wall Fans
Tubeaxial Fans • Vaneaxial Fans • Propeller Roof Ventilators
Fume Hood/Smoke & Heat Exhaust Fans • Mancoolers • Fiberglass Fans

Industrial Fans

Centrifugal Fans • Forward Curved & Air Kit Components • Inline Centrifugal Fans
Plug Fans • Radial Bladed Fans • Radial Tip & High Efficiency Fans
Pressure Blowers • Tubeaxial Fans • Vaneaxial Fans

Custom Design Fans

Easy Access Fans • Insulated Fans • Inlet Boxes - Integral and Detached
Inlet Box Dampers • Independent Bearing Pedestals • Split Housings • Bolted Housings
Spark Resistant Construction • Ultra Fine Balancing • Modified Widths and Diameters
Variable Frequency Drives • API Specifications • Special Materials • Anti-Rotation Devices
Sleeve Oil Bearings • Volume Control Dampers • Inlet Vane Control with External Mechanisms



...One Solution.



5959 TRENTON LANE NORTH • MINNEAPOLIS, MN 55442-3237

PHONE: 763-551-7600 • FAX: 763-551-7601

WWW.TCF.COM